

## Power tool AM5000-EM5000



# Power tool



### General product specifications:

The pneumatic and electric power tools are intended as an alternative to the manual drive and are only used for brief and non-frequent usage. The combination of a manual winch and electric- or pneumatic power tool is not an alternative to an electric winch.

- robust slow speed drive units
- easy to operate
- reversible rotation
- suitable for use on the worm gear winch models starting from WW1000 up to WW7500
- because of a swift and easy connection system this unit is well equipped to serve various winches on one location

### AM5000 product specifications:

- air motor is equipped with a filter and hose fitting
- painted air motor and zinc plated adapter system

### EM5000 product specifications:

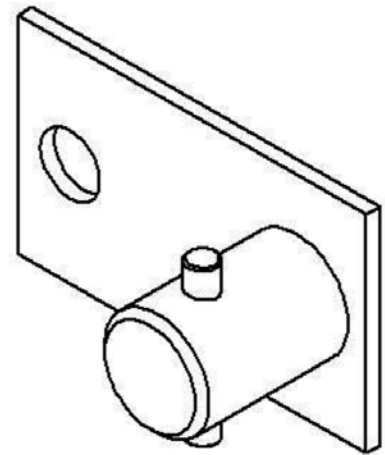
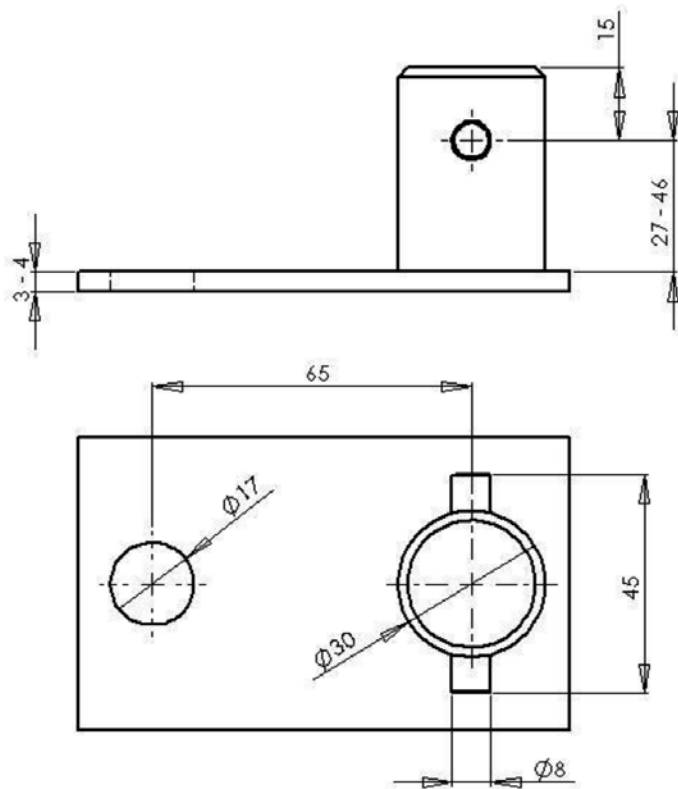
- electric drill motor 230V-50Hz
- metal gear head with MT4 holder
- including zinc plated winch adapter, additional handle, drift key and suspension eyelet

**GEBUWIN**  
metal products

Industrieweg 6, 7102 DZ Winterswijk, The Netherlands  
Telephone: +31(0)543 532600 Email: info@gebuwin.com  
For more information: [www.gebuwin.com](http://www.gebuwin.com)



## Technical specifications AM5000-EM5000



Technical specifications		AM5000	EM5000
Power	W	1200	900
Air pressure	bar	Max. 6-8	-
Voltage - frequency		-	230V-50Hz
Free speed	rpm	140	100
Speed at max. power (torque)	rpm	60 (60-90 Nm)	60 (50-70 Nm)
Dimension L x H x B	mm	545 x 76 x 277	510 x 530 x 150
Own weight	kg	5	13
Air consumption at max power	l/min	2100	-
Min. fitting / hose diameter (inside)	mm	10,4 / 15	-
Cable lenght with plug	m	-	2,5

subject to changes

Form more information: [www.gebuwin.com](http://www.gebuwin.com)